



Lock Smart.

266 Broadway, Suite 302 Brooklyn, NY 11211

P: 877-266-0096 F:877-266-2814

CEILING ACCESS HATCHES Model KSTC/CAD (Concealed Grid)

For Use in Square or Beveled Edge Ceiling Tile



SPECIFICATIONS

GENERAL SCOPE:

Access doors shall be Karp Type KSTC/CAD as manufactured by Karp Associates, Inc., Melville, N.Y. Sizes shall be as indicated on the drawings.

CONSTRUCTION:

1. Frame shall be 20 gage hot dipped galvanized steel with a rib containing a flame retardant polyurethane gasket.
2. Door shall be 20 gage electro-galvanized mild steel.
3. Escutcheon caps shall be plastic molded with hinged flaps.
4. Locks shall be budget locks operated with square shanked key.

STANDARD SIZES (Special Sizes On Request)

DOOR SIZE (IN.) X Y	SHIP WT. (LBS.)
24 x 24	19.0
24 x 48	35.0

DATE

PROJECT DATA

Project Name:

Architect:

Contractor:

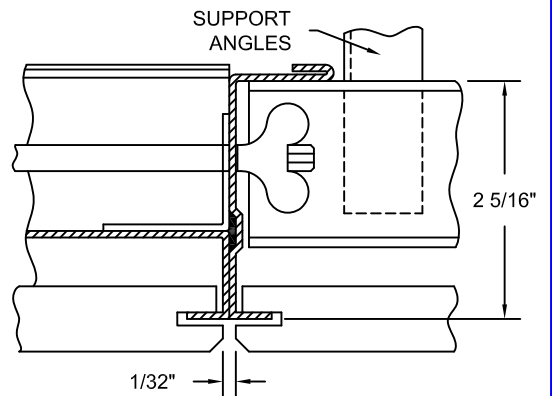
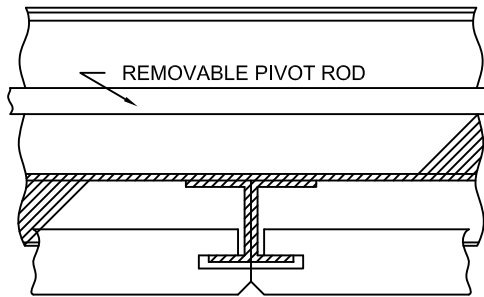
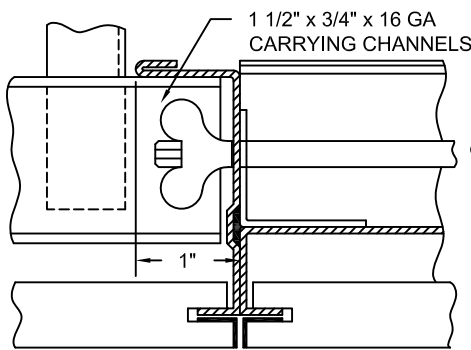
Agent/Customer Name:

Tagging Instructions:

Special Instructions:

PROJECT SCHEDULE

Qty.	H	W	No. of Latches	Finish	Remarks



SECTION A-A



Made with Union Labor