

## CEILING ACCESS HATCHES Model KSTE/CAD (Exposed Grid) For Use in Square or Beveled Edge Ceiling Tile



### SPECIFICATIONS

#### GENERAL SCOPE:

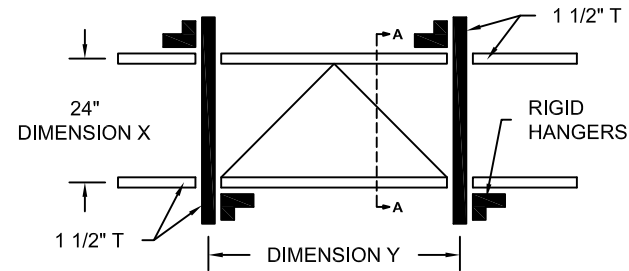
Access doors shall be Karp Type KSTE/CAD as manufactured by Karp Associates, Inc., Melville, N.Y. Sizes shall be as indicated on the drawings.

#### CONSTRUCTION:

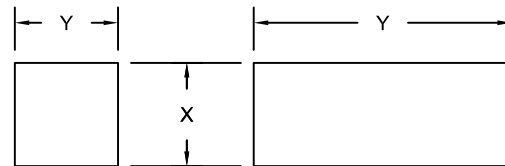
1. Frame shall be 20 gage hot dipped galvanized steel.
2. Door shall be 20 gage electro-galvanized steel with 7/32" flange stove enameled white.
3. Escutcheon caps shall be plastic molded with hinged flaps.
4. Locks shall be budget locks operated with square shanked key.

#### STANDARD SIZES (Special Sizes On Request)

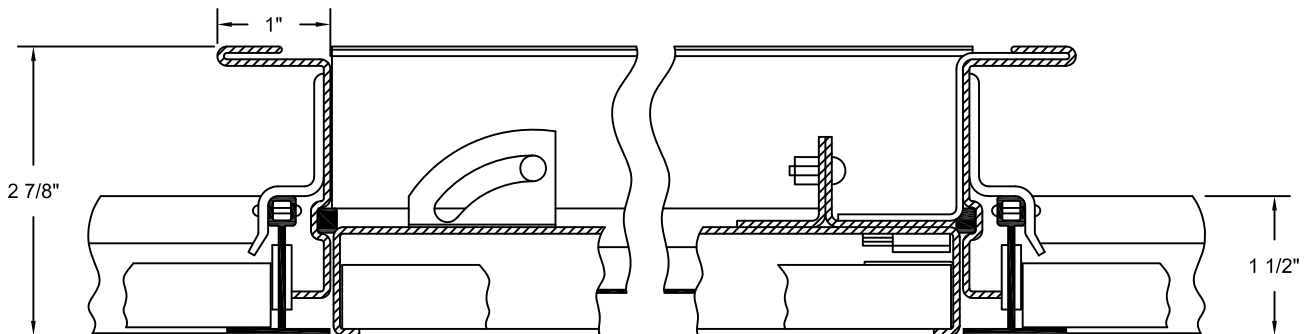
DOOR SIZE (IN.)		SHIP WT. (LBS.)
X	Y	
24 x 24		19.0
24 x 48		35.0



PANEL SUPPORT ILLUSTRATION



OPENING SYSTEMS



SECTION A-A  
SCALE 1:2

DATE

### PROJECT DATA

Project Name:

Architect:

Contractor:

Agent/Customer Name:

Tagging Instructions:

Special Instructions:

### PROJECT SCHEDULE

Qty.	H	W	No. of Latches	Finish	Remarks



Made with Union Labor