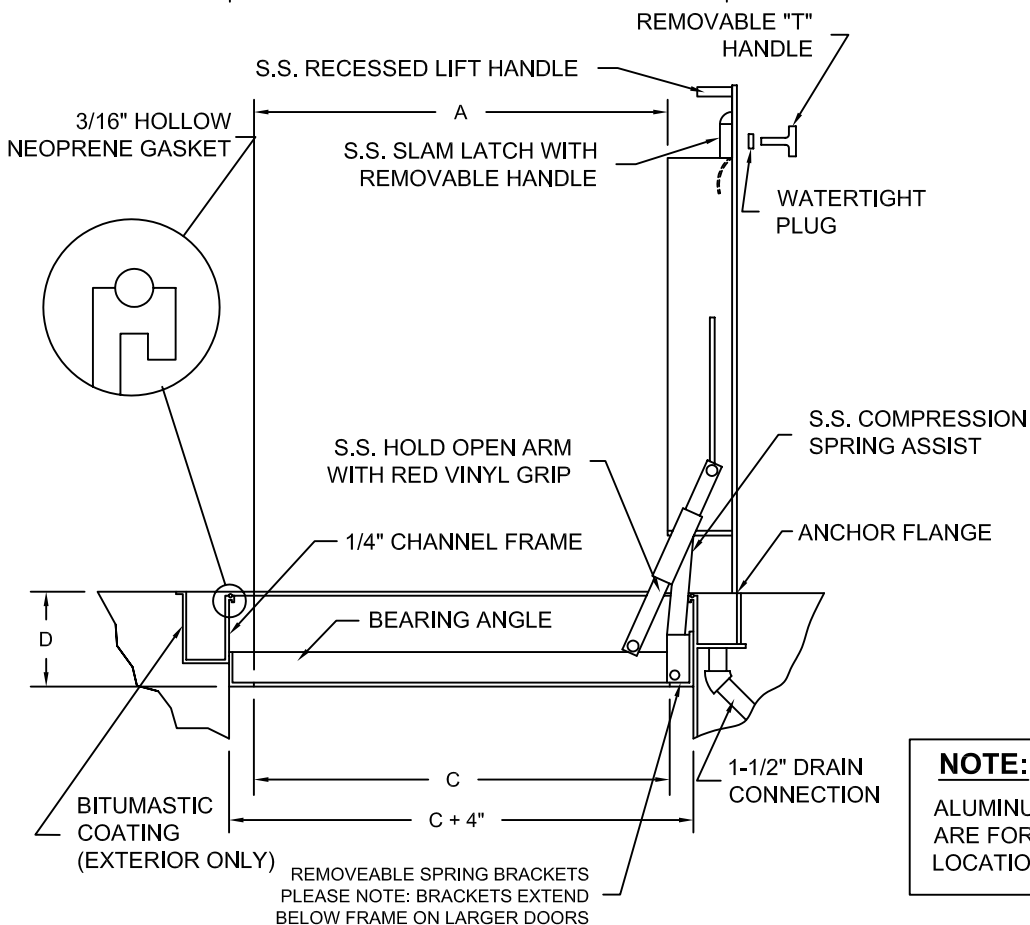


MODEL	"A"	"B"	"C"	"D"	WT.
FD2424AHWS	24"	24"	24"	5.5"	45 lb
FD2430AHWS	24"	30"	24"	5.5"	50 lb
FD2436AHWS	24"	36"	24"	5.5"	55 lb
FD2442AHWS	24"	42"	24"	5.5"	60 lb
FD3030AHWS	30"	30"	31"	6.5"	55 lb
FD3036AHWS	30"	36"	31"	6.5"	60 lb
FD3048AHWS	30"	48"	31"	6.5"	70 lb
FD3636AHWS	36"	36"	37"	6.5"	70 lb
FD3648AHWS	36"	48"	37"	6.5"	85 lb
FD3654AHWS	36"	54"	37"	6.5"	115 lb
FD4242AHWS	42"	42"	44"	7.5"	95 lb



**NOTE:**  
ALUMINUM H2O DOORS ARE FOR OFF-STREET LOCATION ONLY.

**SPECIFICATIONS:**

Access door shall be a watertight door as manufactured by Karp Associates, Inc., Maspeth, NY. Door lid shall be fabricated with 3/16" aluminum diamond plate designed to support a 300 lb./s.f. live load with a maximum deflection of 1/150th of span. Frame shall be a 4" deep extruded aluminum channel-type frame with a 1/8" neoprene gasket, continuous anchor flange and a 1-1/2" drain coupling welded to the underside. Door shall open 90 degrees and automatically lock in that position with a stainless steel hold open arm with a red vinyl grip. Door lid shall be equipped with a recessed lift handle. Hinges shall be all stainless steel and attached with tamperproof fasteners. All hardware shall be grade 316 stainless steel. Doors shall have a mill finish with a bitumastic coating applied to the exterior of the frame to prevent hydrolysis with concrete. Doors shall be equipped with a stainless steel spring assist which shall provide a smooth and controlled operation when opening and closing door. Operation will not be affected by temperature. Door shall be equipped with a stainless steel slam lock with cover plug and removable handle. Door shall be furnished with a peel-off protective cover to protect finish from concrete splatter. Underside of lid shall have visibility tape applied for safety. Manufacturer shall guarantee material and workmanship for a period of ten years.

**OPTIONS:** Skirting to depth of slab, fiberglass insulation, safety chains & posts.  
**LOCK OPTIONS:** staple for padlock, recessed hasp, keyed deadbolt lock, pentahead lock.

"X" Aluminum, H2O  
Loading without impact  
Watertight Door

Karp Associates, Inc.  
54-54 43rd St.  
Maspeth, NY 11378  
TEL: 1-718-784-2105